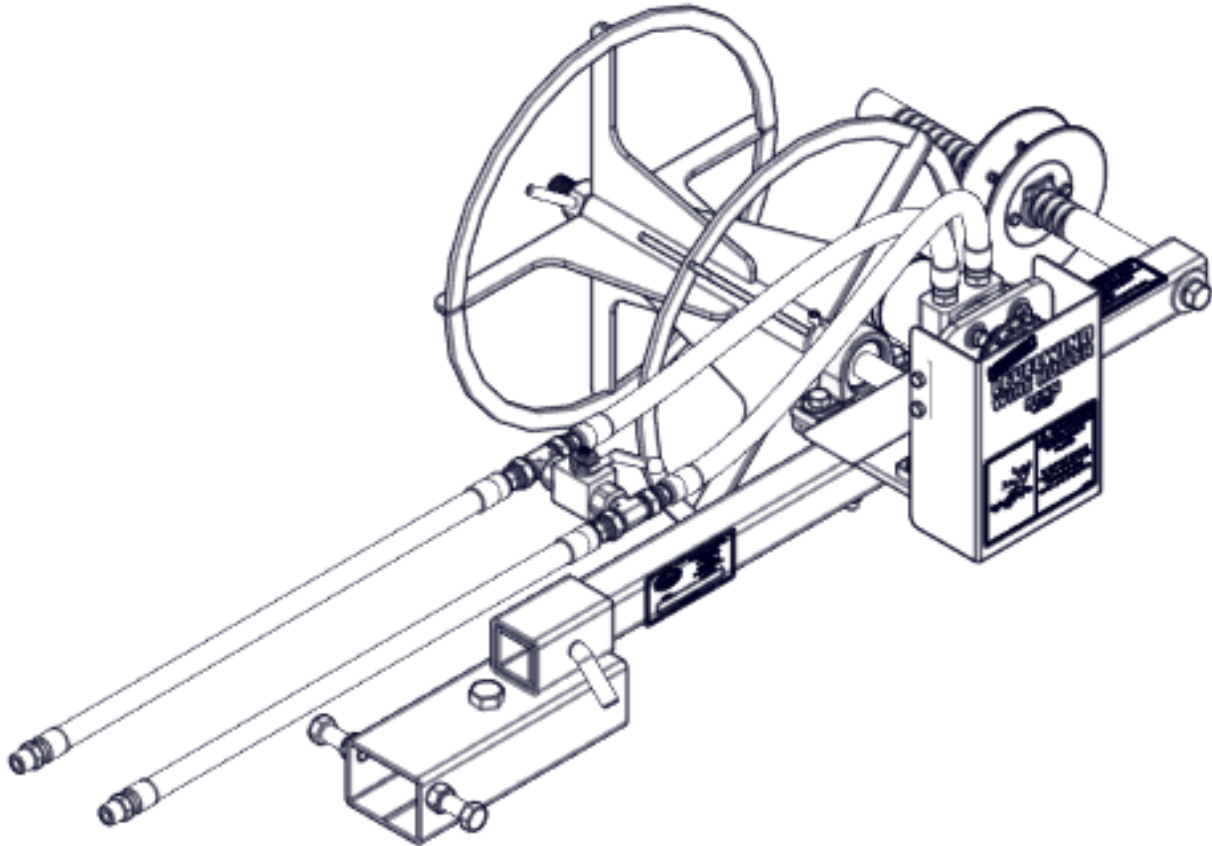


RENN

A DIVISION OF *Degelman*

LevelWind Wire Roller Operator's & Parts Manual Model No. WR7000-0020.00



RENN Mill Center LP.
R.R. #4
Lacombe, Alberta, Canada
T4L 2N4
Phone: (403) 784-3518
Fax : (403) 784-2060
Email : rennmill@rennmill.com
www.rennmill.com

TABLE OF CONTENTS

TABLE OF CONTENTS	1.1
INTRODUCTION	1.3
RENN WARRANTY POLICY	1.4
SERIAL NUMBER LOCATION	1.5
2 SAFETY	2.1
2.1 GENERAL SAFETY	2.2
2.2 OPERATING SAFETY	2.2
2.3 MAINTENANCE SAFETY	2.3
2.4 SAFETY DECALS	2.3
2.5 SAFETY SHIELD PLACEMENT	2.3
3 DECAL LOCATIONS	3.1
3.1 SAFETY DECAL LOCATIONS	3.1
3.2 INFORMATION DECAL LOCATIONS	3.2
4 PDI SETUP	4.1
4.1 LEVEL WIND WIRE ROLLER ASSEMBLY INSTRUCTIONS	4.2
5 SPECIFICATIONS	5.1
10.2 OVERALL DIMENSIONS	5.1
6 PARTS	6.1
6.1 HITCH AND DRIVE SPOOL ASSEMBLY	6.1
6.2 GUIDE WHEEL ASSEMBLY.....	6.3
6.3 MOTOR MOUNT ASSEMBLY	6.4
6.4 HYDRAULICS ASSEMBLY	6.5
6.5 WIRE ROLLER OPTIONAL PARTS.....	6.6
7 NOTES SHEET	7.1

INTRODUCTION

Congratulations on your decision to purchase a Renn LevelWind Wire Roller. This machine has been designed to provide you with the highest standards of quality, reliability and durability. This manual has been prepared to familiarize you with the operation and maintenance of your Wire Roller. We urge you to read the publication carefully and refer to it extensively for correct operating procedure.

The Renn LevelWind Wire Roller is designed to give the operator a maximum capacity and working surface through the use of a large diameter roll. Added to this is a convenient method of roll removal and a new process of roll adjustment, giving the operator infinite control of feed quality. The unit is constructed in a solid manner, giving you value for your dollar and a Wire Roller that will last.

This manual includes a Warranty Policy, a Safety Section, and a Lubrication and Maintenance Schedule. We urge you to read through this information carefully. This will help ensure the safe and trouble-free operation of your Wire Roller. All information, illustrations and specifications in this manual are based on the latest product information available. We, the manufacturer, reserve the right to make any changes at any time without prior notice.

LIMITED WARRANTY



A DIVISION OF *Degelman*

• NEW EQUIPMENT WARRANTY

Subject to the limitations and exclusions set out herein, RENN Mill Center LP. ("Renn") warrants that if any component or part of a machine manufactured by Renn proves to be defective in material or workmanship within

1. (1) year from the delivery date of the original sale to a purchaser who purchases the equipment for their own farming operation use; OR
2. (90) days from the delivery date of the original sale to any other purchaser.

Renn will at Renn's option either repair or replace the defective part without charge. No payments will be made in lieu of repair to the machine. This limited warranty may be enforced by the first purchaser or first consumer user; all subsequent purchasers acquire the product "as is" without any benefit of this limited warranty.

• LIMITATIONS AND EXCLUSIONS

This limited warranty by Renn does not extend to or include:

1. New tires - installed on the equipment which are subject to a separate warranty by the tire manufacturer—see warranty sheet included with your owners manual. All warranty claims must be submitted to the tire manufacturer for approval and payment.
2. Used tires
3. Drive Belts
4. Drive Chains

This limited warranty covers defects in material and workmanship in the parts manufactured by Renn except:

1. Damage resulting from accident, misuse, abuse, neglect or from other than normal and ordinary use of the equipment.
2. Damage resulting from failure to clean or use the product in accordance with the manufacturer's instructions.
3. Renn reserves the manufacturer's right to determine the responsibility for damage as detailed in 1 and 2 above.

Renn shall, as to each defect, be released from all obligations and liabilities under this warranty if;

1. The equipment shall have been operated with any accessory, equipment, component or part not manufactured by Renn or not approved for use by Renn.
2. The equipment shall have been repaired, altered or modified without Renn's approval or if the equipment shall have been operated subsequent to its involvement in an accident or breakdown unless the purchaser furnishes reasonable evidence that such repair, modification or operation subsequent to its involvement in an accident or breakdown was not the cause of the defect;
3. If the purchaser or consumer does not, within 30 days from the date of discovery of the defect, return the defective machine, accessory, equipment component or part at the purchaser's or users expense to an authorized dealer, purchaser shall be responsible for submission of reasonable evidence or proof of date of discovery of subsequent defect.

• WARRANTY AND PARTS REPLACED BY WARRANTY

Renn further warrants that if any genuine Renn part or component utilized by authorized Renn dealers in accordance with this limited warranty proves to be defective in material or workmanship within 90 days of such utilization, Renn will, at Renn's option either repair or replace the defective part without charge. Purchaser shall be responsible for any shipping charges including freight to and from the place where the warranty work is done or performed.

• WHAT YOU MUST DO TO ENFORCE THIS WARRANTY

1. Warranty services must be performed by a dealer authorized by Renn. The purchaser must, at the purchaser's expense, deliver, mail or ship the defective part to any duly authorized dealer in the purchasers area. If the purchaser is unable to locate a dealer in the purchaser's area, please contact Renn. Renn will either refer you to an authorized dealer or instruct you where to return the product. Do not return the product to Renn, without Renn's prior authorization
2. Purchaser must pay any postage, shipping charges, insurance costs, freight and other expenses to and from the place where the warranty work is done or performed if required to return equipment or any component or part to an authorized dealer or as directed by Renn. Purchaser shall be obligated to pay any premium payable for overtime labour if overtime is incurred as a result of a request by the purchaser.

• UNAPPROVED SERVICE OR MODIFICATION

All obligations of Renn under this warranty shall be terminated:

1. If service is performed by someone other than a dealer authorized by Renn or,
2. If equipment is altered or modified in ways not approved by Renn.

Accidents and normal maintenance

This warranty covers only defective material and workmanship. It does not cover depreciation or damage caused by normal wear, accident, improper maintenance, improper protection in storage or improper use. The cost of normal maintenance and replacement of service items, oil filters, cutting parts, tires, bearings, chains, sprockets or brake parts shall be paid for by the purchaser.

• NO REPRESENTATION OR IMPLIED WARRANTY

1. Where permitted by law, neither Renn nor any company affiliated with it makes any warranties, representation or promises expressed or implied as to the quality or performance of its products other than those set forth above.
2. Renn makes no warranty of merchantability or fitness for a particular purpose.

• IMPROVEMENTS OR CHANGES

Renn reserves the right to make improvements or changes in design and specifications at any time without incurring any obligation to owners of previously sold units.

• WARRANTY CLAIM PROCEDURE

Warranty Claim Form must be delivered to Renn within 60 days after the warranty work was performed. Defective parts must be held for inspection for 90 days after the work was performed. Renn may request that parts be returned to the Renn factory for inspection. If approved, Renn will issue a credit within 60 days of receiving the warranty claim.

• ACKNOWLEDGEMENT REQUIRED

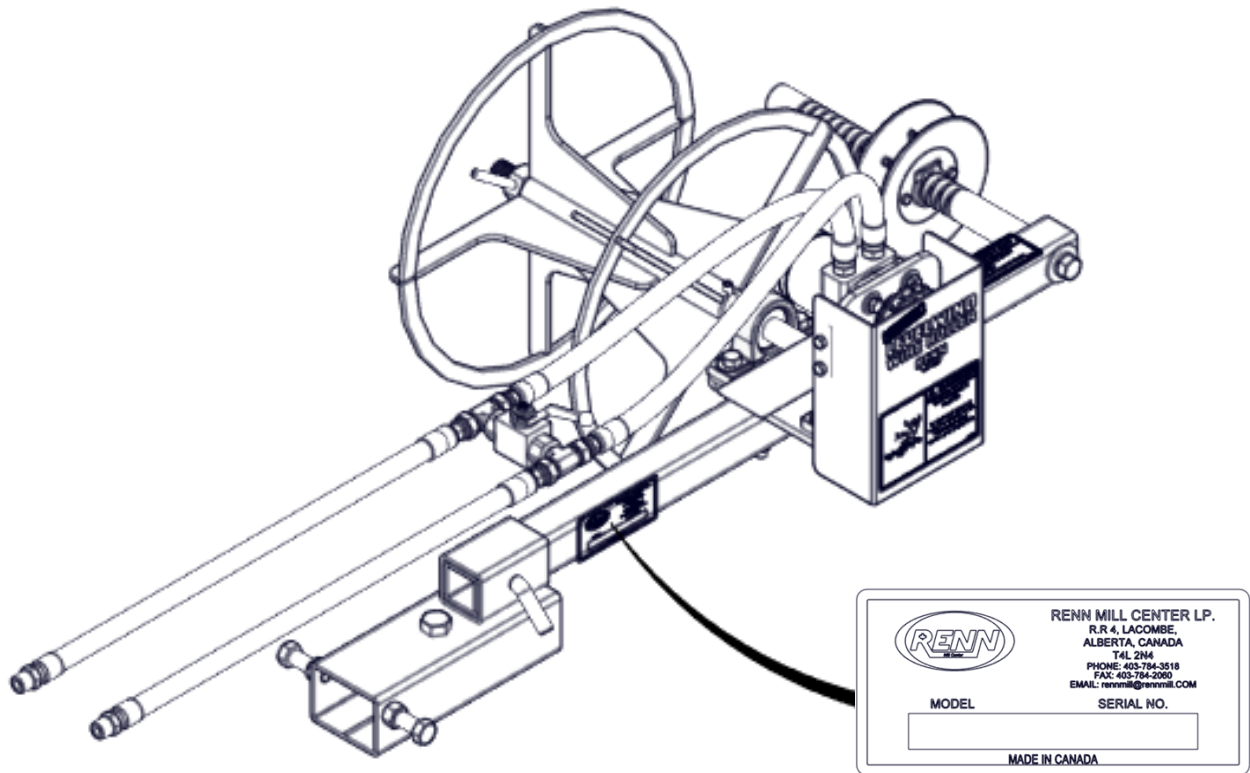
Renn shall have no obligation under this warranty unless the "Warranty Registration" included with your owners manual signed by purchaser and dealer is delivered to Renn within 30 days from the date of sale.

IMPORTANT NOTICE

To activate warranty coverage, the owner / dealer must complete the Warranty Registration form that can be found online and return to Renn Mill Center LP. R.R. 4, Lacombe, Alberta, Canada, T4L 2N4 within 30 days of retail sale.

LEVELWIND WIRE ROLLER SERIAL NUMBER LOCATION

The serial number plate is located on the inside face of the tube section of the LevelWind Wire Roller, on the driver's side of the machine.



IMPORTANT: For fast, correct service when ordering parts, supply the following information to your local Renn Dealer:

- 1) The model number
- 2) The serial number

This information is essential when ordering parts for your Renn Wire Roller.

2 SAFETY

Safety Alert Symbol

This Safety Alert symbol means

**ATTENTION!
BE ALERT!
YOUR SAFETY IS
INVOLVED!**



The Safety Alert symbol identifies important safety messages on the Renn Mill and in the manual. When you see this symbol, be alert to the possibility of personal injury or death. Follow the instructions in the safety message.

Why is SAFETY important to you?

3 Big Reasons

Accidents Disable and Kill

Accidents Cost

Accidents Can Be Avoided

SIGNAL WORDS:

Note the use of the signal words **DANGER**, **WARNING**, and **CAUTION** with the safety messages. The appropriate signal word for each message has been selected using the following guidelines:

DANGER -

Indicates an imminently hazardous situation that, if not avoided, will result in death or serious injury. This signal word is to be limited to the most extreme situations, typically for machine components that, for functional purposes, cannot be guarded.

WARNING -

Indicates a potentially hazardous situation that, if not avoided, could result in death or serious injury, and includes hazards that are exposed when guards are removed. It may also be used to alert against unsafe practices.

CAUTION -

Indicates a potentially hazardous situation that, if not avoided, may result in minor or moderate injury. It may also be used to alert against unsafe practices.

2 SAFETY



You are responsible for the SAFE operation and maintenance of your Renn LevelWind Wire Roller. YOU must ensure that you and anyone else who is going to operate, maintain or work around the LevelWind Wire Roller be familiar with the operating and maintenance procedures and related SAFETY information contained in this manual. This manual will take you step-by-step through your working day and will alert you to all good safety practices that should be adhered to while operating the Wire Roller.

Remember, YOU are the key to safety. Good safety practices not only protect you but also the people around you. Make these practices a working part of your safety program. Be certain that EVERYONE operating this equipment is familiar with the recommended operating and maintenance procedures and follows all of the safety precautions. Most accidents can be prevented. Do not risk injury or death by ignoring good safety practices.

- LevelWind Wire Roller owners must give operating instructions to operators or employees before allowing them to operate the LevelWind Wire Roller, and at least annually thereafter per OSHA regulation 1928.57.
 - The most important safety device on this equipment is a SAFE operator. It is the operator's responsibility to read and understand ALL Safety and Operating instructions in the manual and to follow them. All accidents can be avoided.
 - A person who has not read and understood all operating and safety instructions is not qualified to operate the machine. An untrained operator exposes himself and bystanders to possible serious injury or death.
1. Do not modify the equipment in any way. Unauthorized modification may impair the function and/or safety and could affect the life of the equipment. Failure to heed this warning will result in forfeiture of warranty.
- Think SAFETY! Work SAFELY!

2.1 General Safety

1. Only trained, competent persons should operate the Wire Roller. An untrained operator is not qualified to operate the machine.
2. Review safety related items with all personnel annually

2.2 Operating Safety

1. Read and understand the Operator's Manual and all safety signs before using the machine.
2. Keep hands, feet, hair and clothing away from all moving and/or rotating parts.
3. Do not allow riders on the Wire Roller or tractor during operation or transportation.
4. Clear the area of all bystanders, especially children, before starting.
5. Review safety instructions annually.

2 SAFETY



2.3 Maintenance Safety

1. Place all controls in neutral, stop the engine, set the parking brake, remove the ignition key, wait for all moving parts to stop and disengage from the tractor before servicing, adjusting, repairing or unplugging.
2. Perform a lock out tag out (LOTO) procedure if required.
3. Relieve pressure from the hydraulic circuit before servicing or disconnecting from the tractor.
4. Install and secure all guards and shields before resuming operation.

2.4 Safety Decals

1. Keep safety decals clean and legible at all times.
2. Replace safety decals that are missing or have become illegible.
3. Replaced parts that displayed a safety decal should also display the same decal.
4. Safety decals are available through your authorized Renn Dealer.

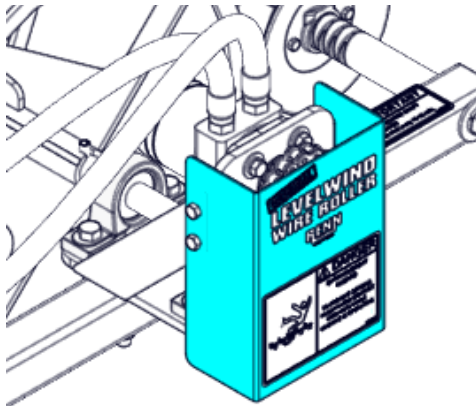
2 SAFETY



2.5 Safety Shield Placement

After servicing or maintenance, these shields should be back in place.

Chain Guard



3 DECAL LOCATIONS

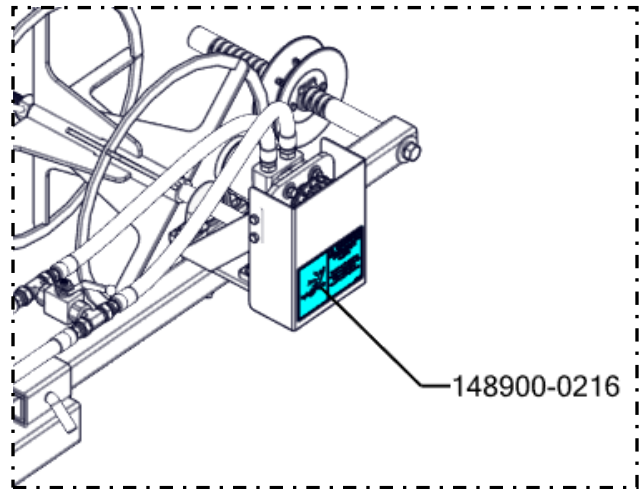
3.1 Safety Decal Locations

The types of safety decals and locations on the equipment are shown in the following illustrations. Good safety requires that you familiarize yourself with the various safety decals, the type of warning and the area, or particular function related to that area, that requires your SAFETY AWARENESS.

- THINK SAFETY!!, WORK SAFELY!!



148900-0216



REMEMBER - If safety decals have been damaged, removed, or become illegible, or if parts have been replaced that previously displayed safety decals but no longer display them, new decals must be applied. New safety decals are available from your authorized dealer.

3 DECAL LOCATIONS

3.2 Information Decal Locations

The types of informational and operational decals and locations on the equipment are shown in the following illustrations. Good operation requires that you familiarize yourself with the various operational decals, the type of warning and the area, or particular function related to that area, that requires your AWARENESS.

- WORK SAFELY!!



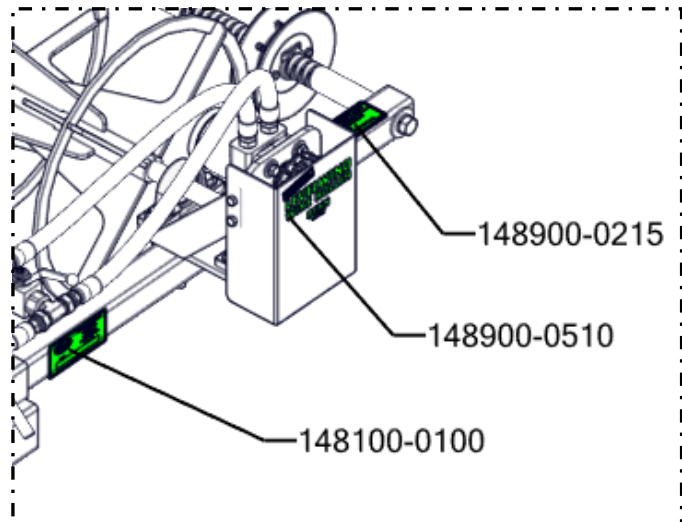
148100-0100



148900-0215



148900-0510

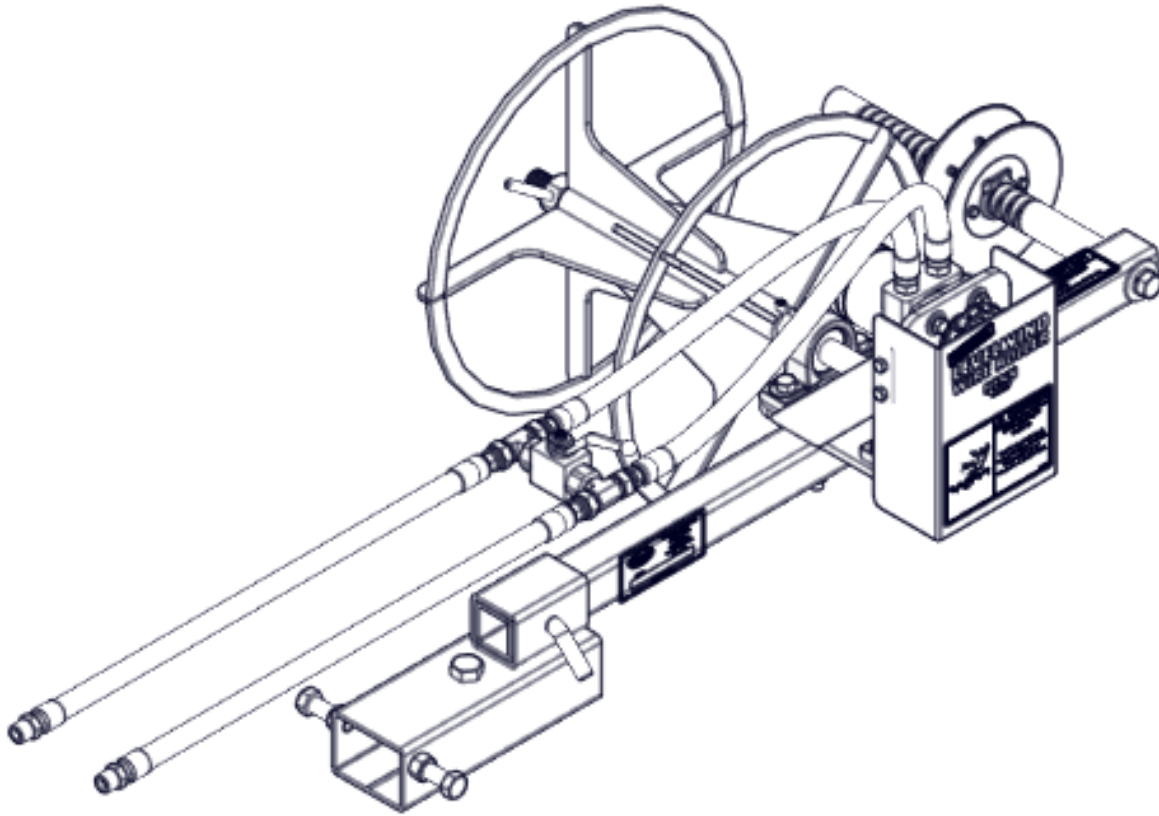


4 PDI SETUP

Your Renn Roller Wire comes fully disassembled.

Note:

- Practice proper safety procedures while lifting heavy objects.
- Parts on these pages are to illustrate what parts may need to be assembled.



4 PDI SETUP

4.1 LevelWind Wire Roller Assembly Instructions

- Install bearings into housings and slide 1" shaft into bearings/pillow blocks. DO NOT TIGHTEN.
- Install bearings onto main frame using the 4 - ½ x 2" bolts and lock washers. Use the outside 4 holes (not the slotted holes). Leave shaft protrude from frame approximately 1 5/8". Tighten bearing housings to frame. Tighten locking collars for the bearing housing onto the shaft.

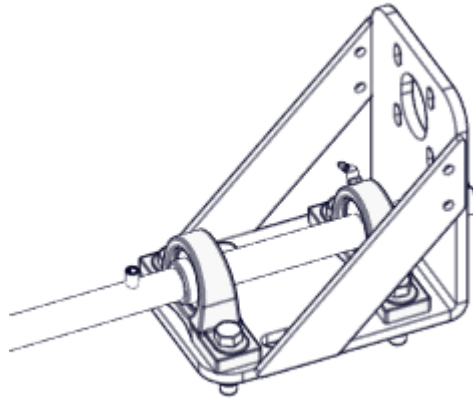


Fig 4.1

- Mount hydraulic motor to frame using the 4- 3/8 x 1 bolts with lock and flat washers. Install sprockets putting the smaller sprocket on the motor. Align sprockets. Tighten set-screws on sprockets. (Note: reversing the sprockets can change speed of spool).
- Install chain and adjust slack by sliding the motor upwards. Tighten motor mounting bolts.
- Install roll pin in hole of shaft. Flush to one side of shaft

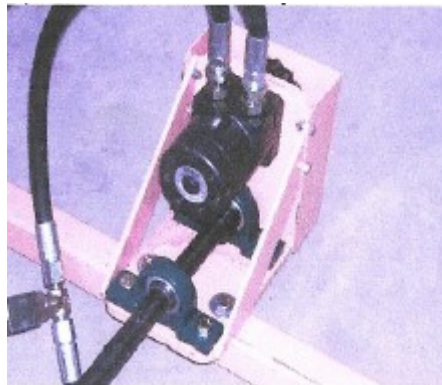


Fig 4.2

6 PDI SETUP

4.1 Level Roller Wire Assembly Instructions (Cont'd)

- Install the chain shield with the 5/16" bolts being careful to leave about 1/8" clearance between sprockets and shield.
- Install Motor bracket onto 2" tubing using the 1/2 x 3" bolts with flat and lock washers. (warning sticker up)
- Install wire guide to 2" frame, 1" from end, using 5/8 x 3.5" bolt. With flat and lock washers.

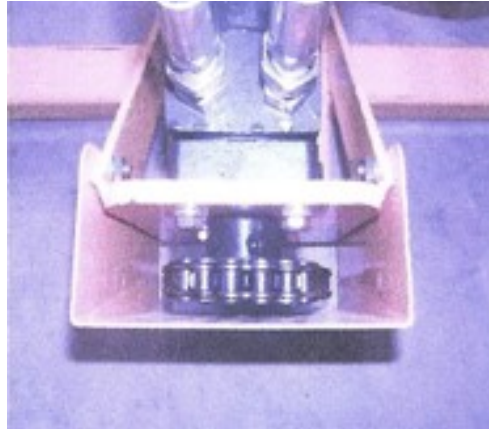


Fig 4.3

4.1 Level Roller Wire Assembly Instructions (Hydraulic System)

- Use thread tape on all NPT fittings
- Valve is installed between the two brass T's
- Two hoses to motor- then the Valve assembly and finally two more hoses with pioneer ends complete assembly

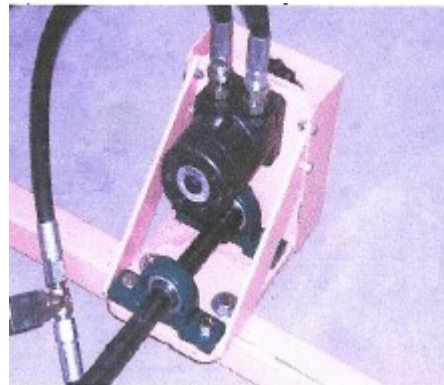


Fig 4.4

6 PDI SETUP

4.1 Level Roller Wire Assembly Instructions (Cont'd)

- The hitch adapter is bolted to tractor drawbar and wire spooler is pinned to the receiver of the hitch adapter. Note: The completed assembly can be mounted any way you see fit.

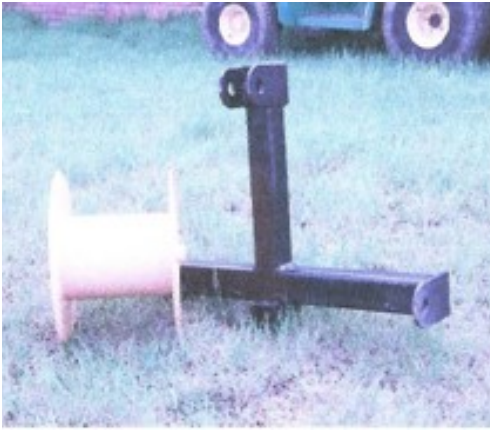


Fig 4.5

3-point hitch and high tensile spool
(Optional)



Fig 4.6

Complete Assembly

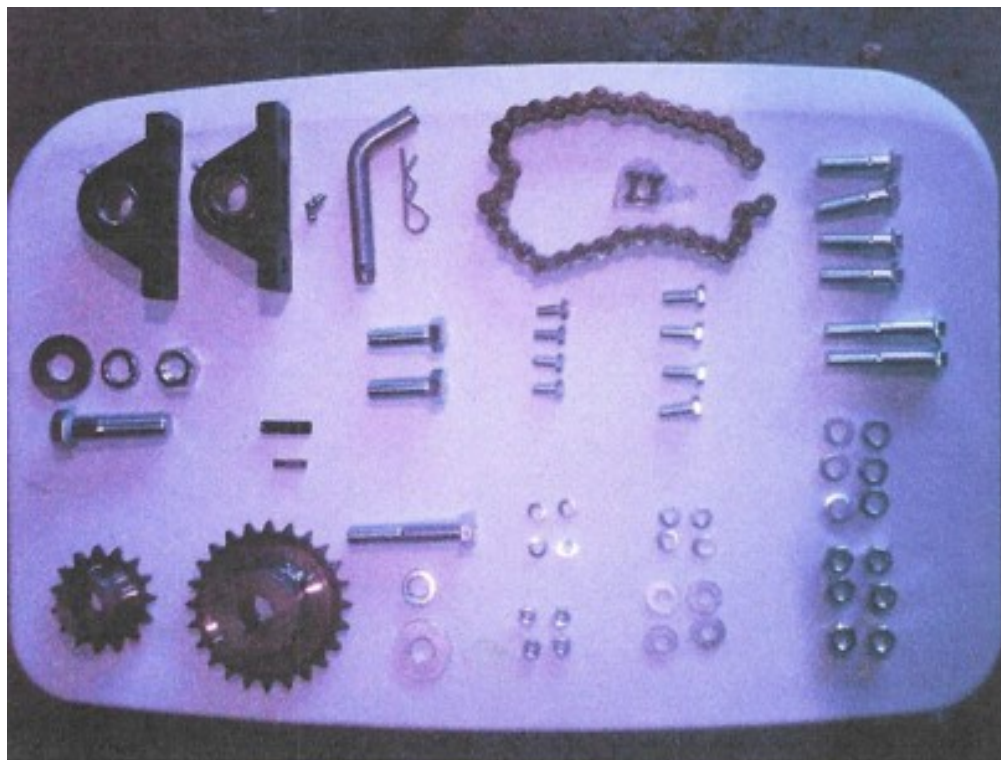


Fig 4.7

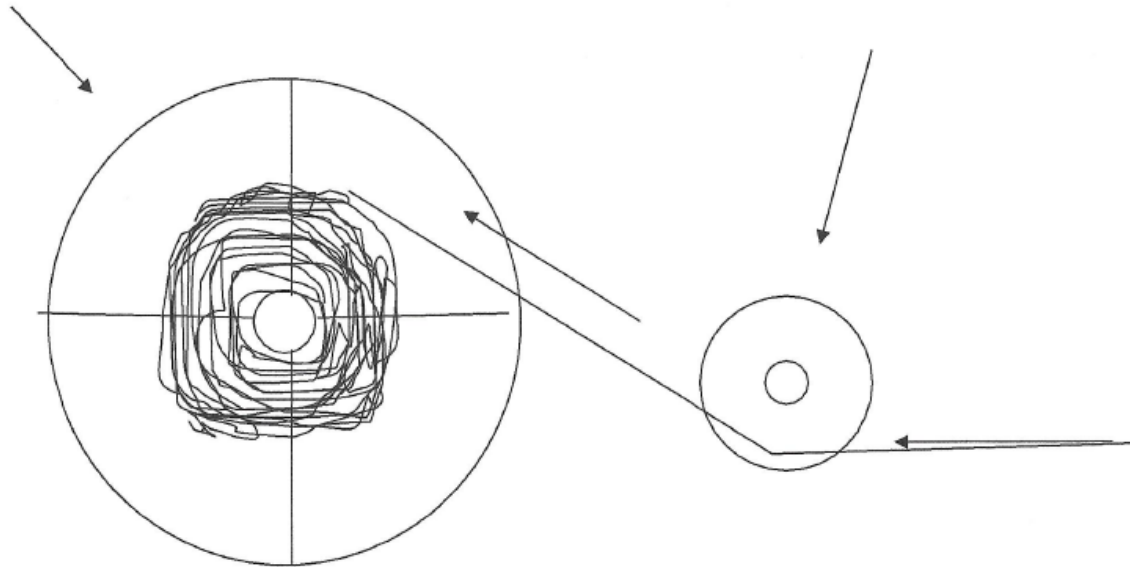
PARTS

6 PDI SETUP

4.1 Level Roller Wire Assembly Instructions (Cont'd)

Wire Spool Assembly

Wire Guide Wheel



- Wire goes under guide wheel and over the spool assembly.

Warning! Do not come in contact with the wire as the LevelWind Wire Roller is rolling wire.

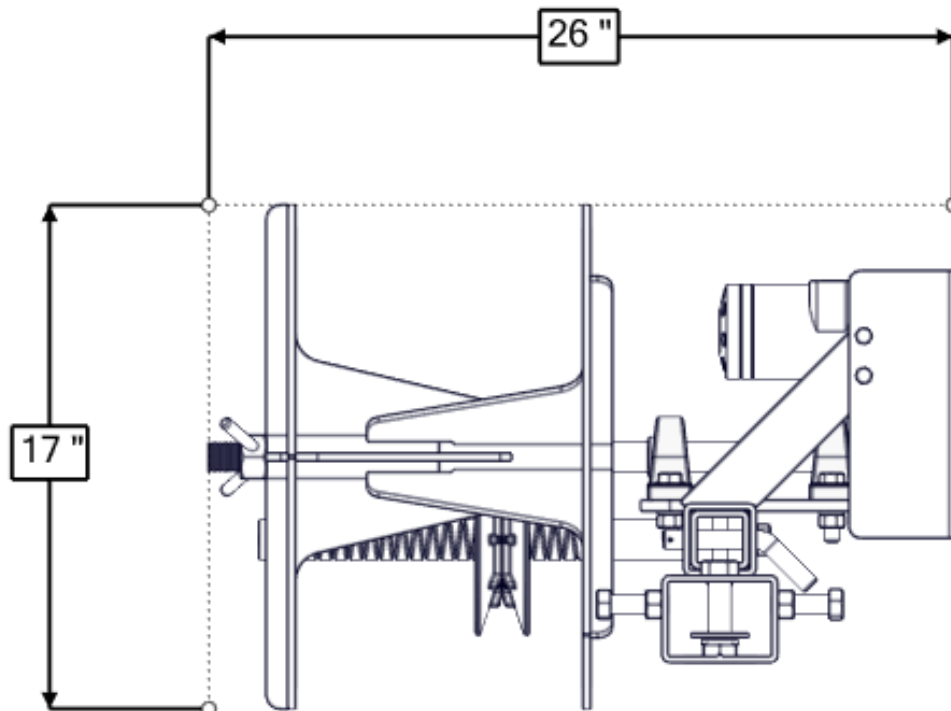
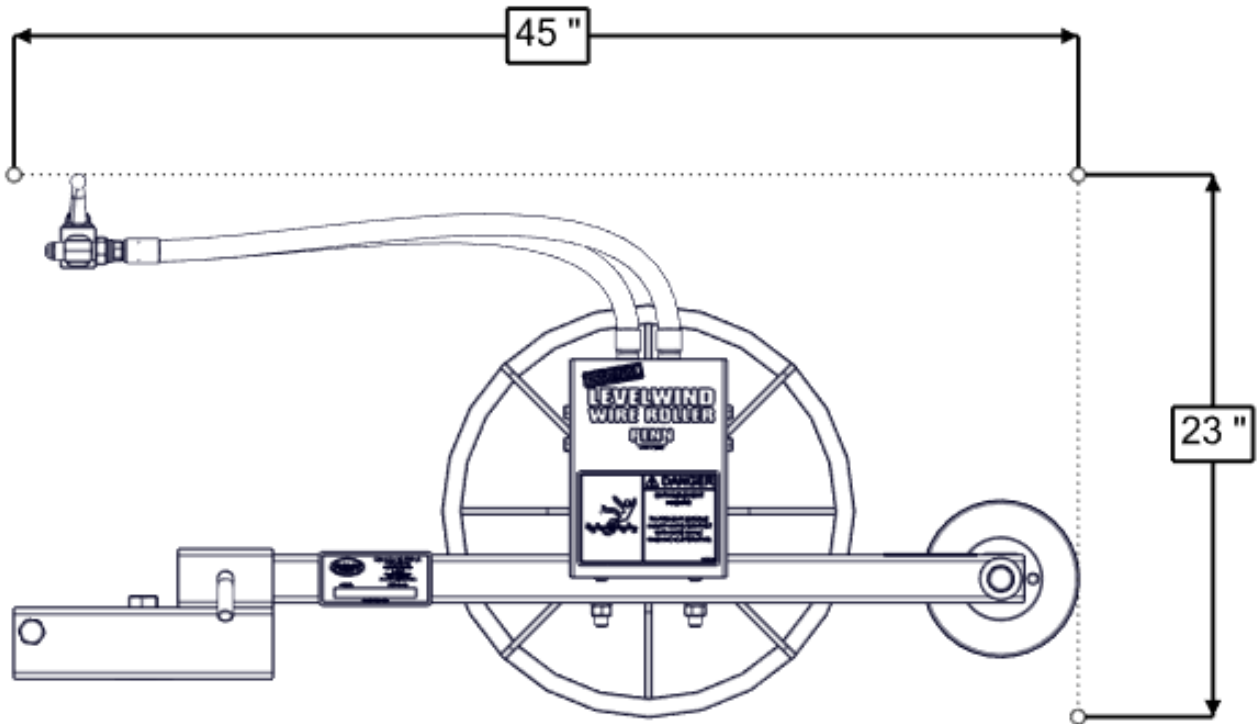
IMPORTANT INFORMATION

1. **KEEP WIRE GUIDE WHEEL AND SHAFT WELL OILED.** Have oil can handy; give at least 4 squirts per spool. **(No harm will come with too much oil)**
2. Wire guide wear point is at underside of the shaft, to extend shaft life, **ROTATE THE SHAFT** a ¼ turn after every 10 - 15 full spools.
3. **BYPASS THE GUIDE** for the first hard pull to ensure the wire is free from snags, Ensure that 1/4 turn valve is cracked (Slightly open) to avoid full pressure to motor at this time. Cracking the valve acts as a pressure relief, and avoids damage to the winder. Once you are sure the wire is free, stop roller, place wire in guide, and continue rolling. This will help to extend the life of the guide.

5 SPECIFICATIONS

5.2 Overall Dimensions

5.2.1 Working Mode & Transport Mode



**PAGE INTENTIONALLY LEFT
BLANK**

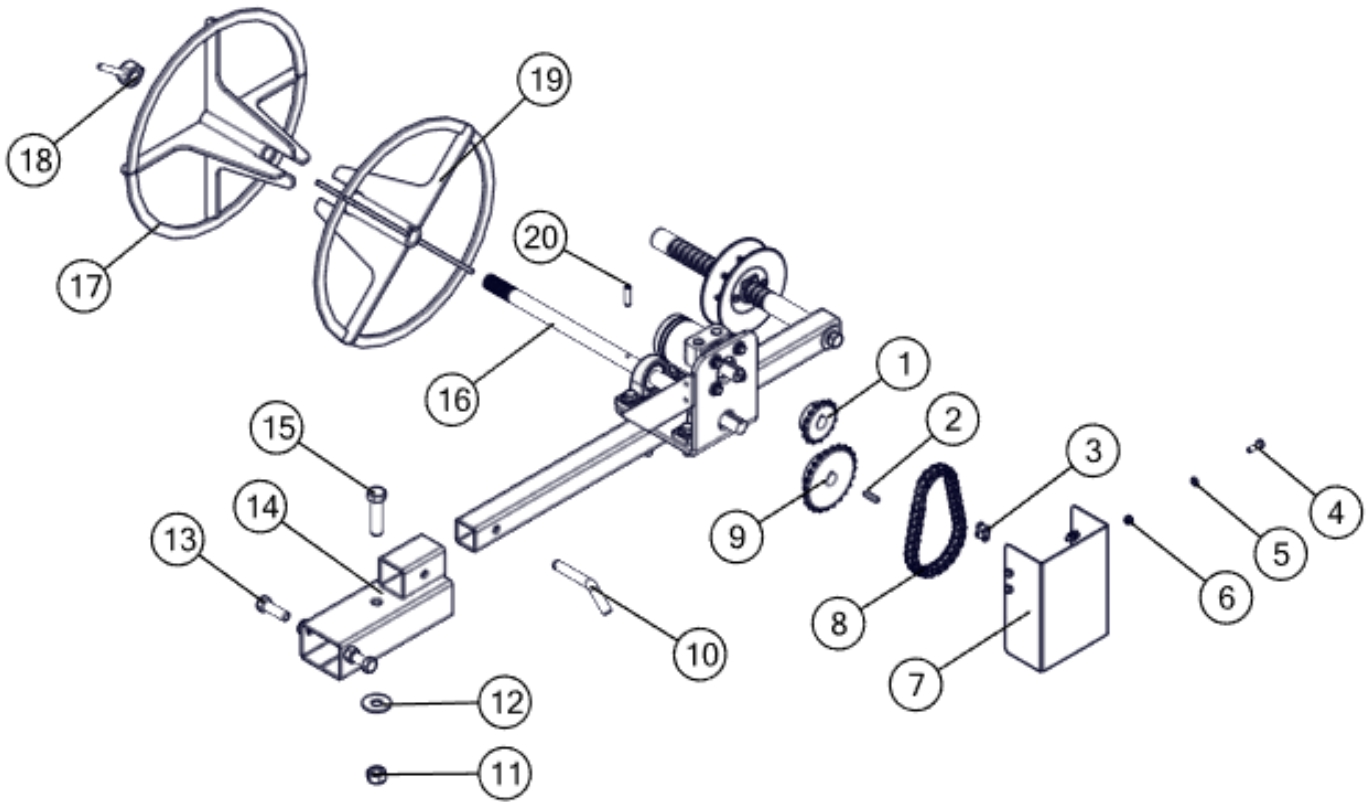
11 PARTS

6.1 Hitch and Drive Spool Assembly

REF #	PART #	DESCRIPTION	QTY
1	129000-0001	H50B15 x 1" BORE SPROCKET	1
2	WR4000-0054.00	1/4 KS	1
3	140200-0050	Connector Link - 50 Chain	1
4	159300-0735	Hex Bolt 5/16" NC x 1" Gr.5 PL	4
5	168600-0062	Washer Lock 5/16" PL	4
6	167000-0778	Hex Nut 5/16" NC Gr.5 Plated	4
7	WR4000-0031.00	Chain Guard	1
8	WR4000-0055.00	Drive Chain - 33 Links	1
9	129000-0002	H50B24 x 1" Bore Sprocket	1
10	161800-0010	Bent Pin - 5/8" x 3"	1
11	167000-0835	Hex Nut - 3/4" NC Gr.5 PL	1
12	168000-0090	Flat Washer - 3/4" USS PL	1
13	159400-0628	Hex Bolt - 5/8" NC x 2" Gr.5	2
14	WR6000-0023.00	Hitch Connector	1
15	159400-0808	Hex Bolt 3/4" NC x 3" Gr.5 PL	1
16	WR4000-0024.00	Shaft - Roll Up	1
17	WR6000-0020.00	Idler Wheel - Rollup	1
18	WR6000-0022.00	Nut Handle	1
19	WR6000-0021.00	Drive Spool - Roll Up	1
20	172200-0795	Spring Pin 3/8" x 1-1/2"	1

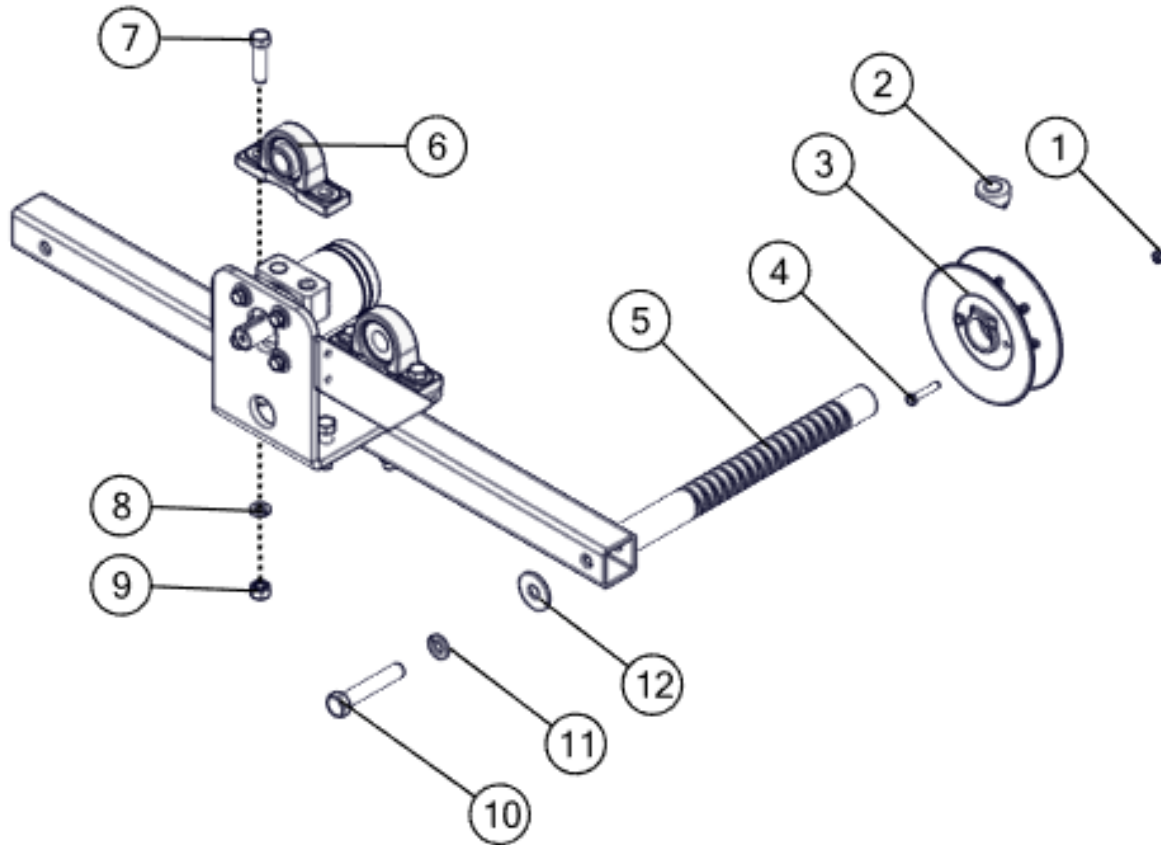
11 PARTS

6.1 Hitch and Drive Spool Assembly



11 PARTS

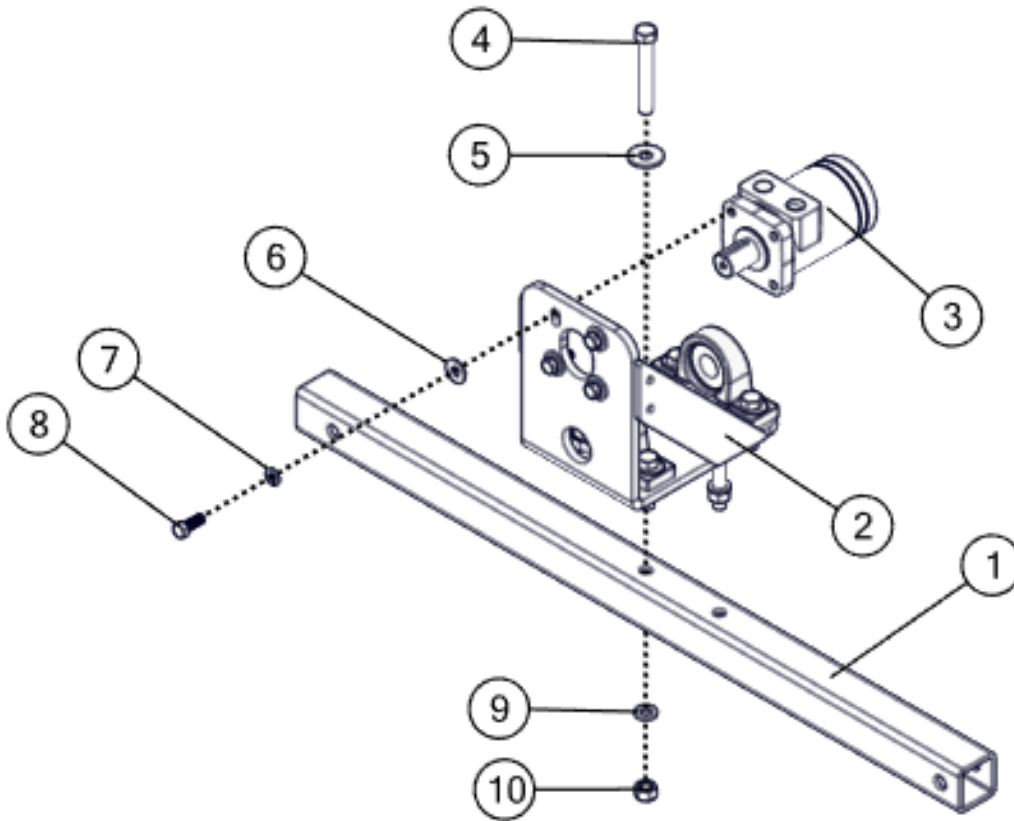
6.2 Guide Wheel Assembly



REF #	PART #	DESCRIPTION	QTY
1	167200-0642	Nyloc Nut - 1/4" NC Gr.5 PL	2
2	066000-0131	Internal Pawl - Guide Wheel	1
3	124000-0100	Cast Guide Wheel (Pair)	1
4	159300-0550	Hex Bolt 1/4" NC x 1-1/2" Gr.5 PL	2
5	066000-0130	Auto Reversing Shaft	1
6	113900-0918	1" ID Bearing and Pillow Block FK	2
7	159400-0427	Hex Bolt 1/2" NC x 2" Gr.5 PL	4
8	168600-0098	Lock Washer - 1/2" PL	4
9	167000-0809	Hex Nut - 1/2" NC Gr.5 PL	4
10	159400-0700	Hex Bolt - 5/8" NC x 3-1/2"	1
11	168600-0120	Lock Washer - 5/8" PL	1
12	168000-0080	Flat Washer - 5/8" USS PL	1

11 PARTS

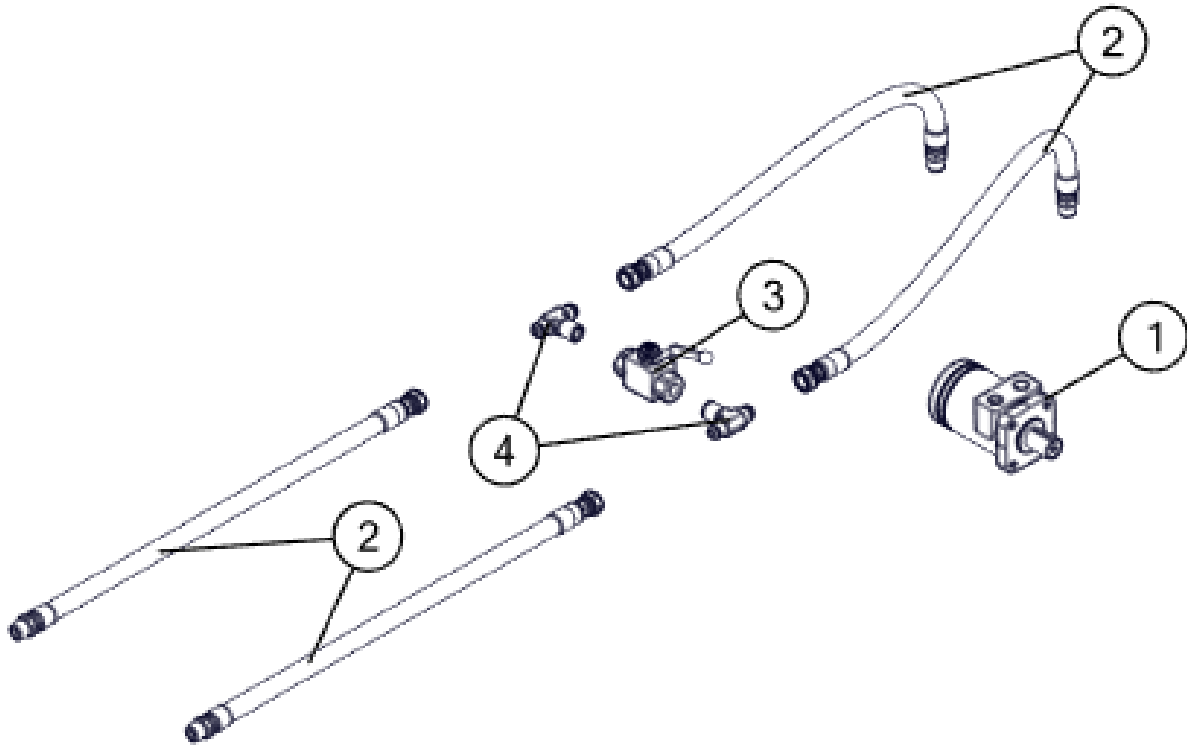
6.3 Motor Mount Assembly



REF #	PART #	DESCRIPTION	QTY
1	WR4000-0026.01	Tube Section	1
2	WR6000-0024.00	Motor Mount	1
3	111100-0036	Hydraulic Motor - 3.6 cu. in. - Orbital	1
4	159400-0485	Hex Bolt - 1/2" NC x 3-1/2" Gr.5 PL	2
5	168000-0065	Flat Washer - 1/2" USS PLTD	2
6	168000-0049	Flat Washer - 3/8" USS PL	4
7	168600-0071	Lock Washer - 3/8" PL	4
8	159300-0961	Hex Bolt - 3/8" NC x 1" Gr.5 PL	4
9	168600-0098	Lock Washer - 1/2" PL	2
10	167000-0809	Hex Nut - 1/2" NC Gr.5 PL	2

11 PARTS

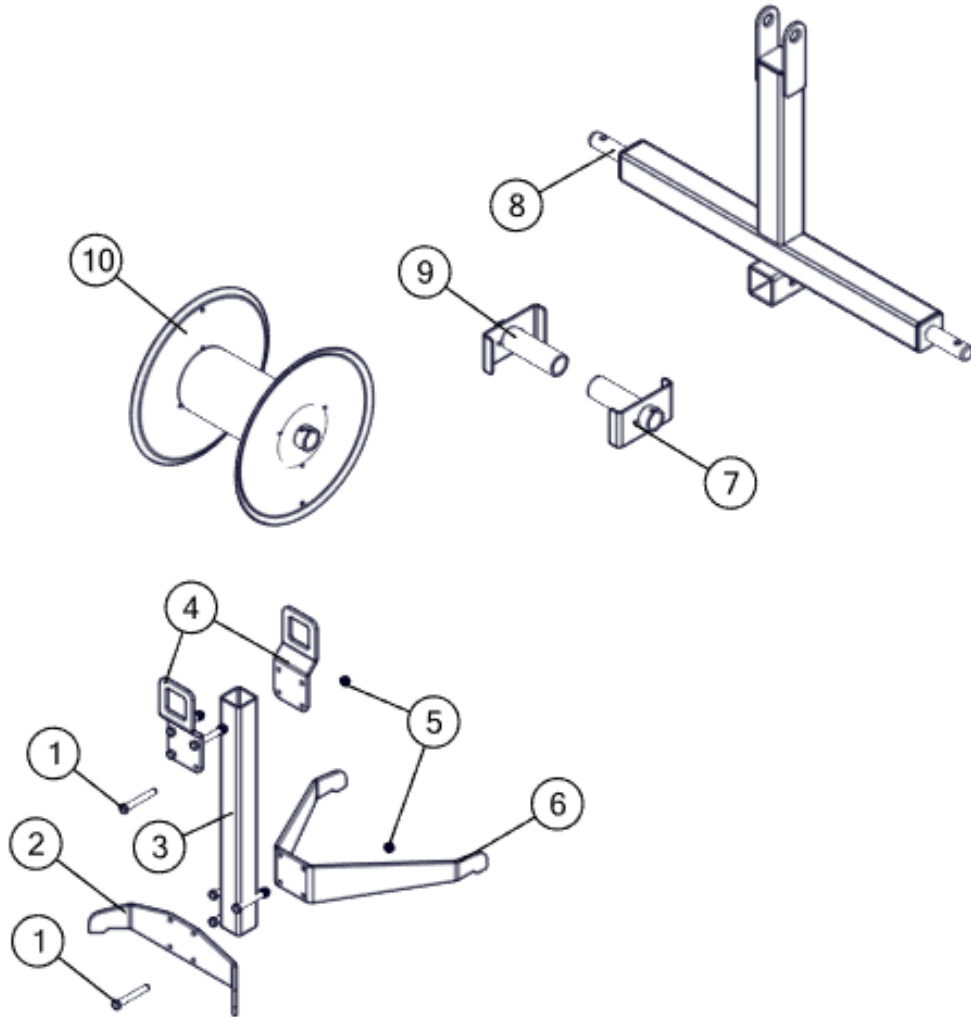
6.4 Hydraulics Assembly



REF #	PART #	DESCRIPTION	QTY
1	111100-0036	Hydraulic Motor - 3.6 cu. in. - Orbital	1
2	393500-0027	1/2" HOSE 24" - 1/2"MPT TO #8JICF SW	4
3	111100-0001	High Pressure Ball Valve - 1/2" FPT	1
4	085100-0818	Tee - #8JICM x #8JICM x 1/2" MNPT	2

11 PARTS

6.5 Wire Roller (Optional Parts)



REF #	PART #	DESCRIPTION	QTY
1	159400-0005	Hex Bolt - 3/8" NC x 3" Gr.5 PL	8
2	WR4000-0035.00	Wide Base - Stand	1
3	WR4000-0038.00	Upright - Stand	1
4	WR4000-0036.00	Top Jog - Stand	2
5	167000-0787	Hex Nut - 3/8" NC Gr.5 PL	8
6	WR4000-0037.00	Long Base- Stand	1
7	WR6000-0026.00	New Wire Drive Spindle	1
8	WR6000-0027.00	3PT Attachment	1
9	WR6000-0028.00	New Wire Idler Spindle	1
10	WR6000-0025.00	Spool	1

RENN

A DIVISION OF *Degelman*

Printed in Canada